



PHOENIX

Owner's Manual

REVISED OCTOBER 2023

Address

5800 Enterprise Dr.

Jackson, MI 49201

PHONE

517-780-9090



TABLE OF CONTENTS

Introduction.....	3
Warnings.....	4
Specifications.....	5
Mounting the Suppressor on Sub-Machine Guns.....	5
Tri-Lock Mounting Instructions.....	6
Mounting the Optional Thread on Rear Mount.....	7
Construction of the Phoenix Suppressor.....	7
Cleaning the Phoenix Suppressor.....	7
Field Stripping.....	8
Maintenance of the Tri-Lock Mount.....	9
Warranty.....	10
Manufacturer’s Disclaimer.....	10

Thank You for Purchasing the Phoenix!

Thank you for your purchase of a GSL Technology suppressor. We take pride in our engineering driven products that are now, and will always be, designed and manufactured entirely in the United States.

With 9 patents to his credit, and over 35 years of suppressor design and manufacturing experience, our owner and founder Greg Latka has been one of the driving forces in the suppressor industry.

We are confident that you have in your hands, one of the best firearm suppressors available today. Marketing hype is one thing, but performance is entirely different. Our suppressors will quietly perform with the enduring reliability that you can count on for years to come.

GSL Technology is an engineering, performance driven company. We are one of the very few ISO 9000 certified companies in the industry. That means that our company holds itself to a higher level of accountable quality that remains constant over time.

We strive to design and manufacture the best suppressors available on the market within their service criteria.

If you are new to suppressors, you are in for a treat. If you're an old pro, we hope that you will enjoy the fruits of our labor and spread the word!



Warnings



WARNING! Read the operation and maintenance manual in its entirety before using suppressor. Failure to follow the installation and maintenance instructions detailed in this manual can result in potential for serious injury to the user and damage to the weapon.



Verify Firearm is Unloaded. Visually and physically confirm your firearm is unloaded before attempting or performing any of the procedures in this manual. Failure to ensure the firearm is unloaded could result in unintentional discharge, causing injury or death.



BURN WARNING: Allow suppressor to cool to ambient temperature before removal and/or service. The outside surface temperature of this suppressor may exceed 40 C/104 F. Therefore protective gloves should be worn at all times in attaching or detaching the suppressor. Failure to do so may result in severe burns to hands and any other unprotected skin surface.



PINCH WARNING: Could be customized to the multi cal (as to changing out) but in attaching or detaching the can for all cans. *The point of attachment and detachment is a pinch point and caution should be taken, including wearing protective gloves, to avoid severe injury at this pinch point.



MUZZLE WARNING: The muzzle of the firearm is different when a suppressor is attached. However, this is still the point where the projectile exits the weapon system and the muzzle should not cover or sweep any area the user is not wanting to shoot and kill.



SONIC CRACK WARNING: This suppressor will not protect end-users and those in close proximity from hearing damage when, and if, the projectile crosses the sound barrier. Thus, proper hearing (and eye protection) should be worn at all times.

Phoenix Specifications

The Phoenix Suppressor is an upgraded version of the classic MK-9K Suppressor. The original MK-9K was a co-axial design, utilizing stamped washers and spacers. The Phoenix Suppressor maintains this co-axial design. The upgraded machine cones and make this unit much more efficient than its predecessor. The Phoenix Suppressor is designed for the Heckler and Koh MP5 sub-machine gun. It should never be used on a center fire rifle.

Mounting the Suppressor to the Heckler and Koch MP5 Sub-Machine Gun

The Heckler and Koch sub-machine gun utilizes a 3-lug mount. Some versions have a threaded barrel with a knurled thread protector. The Phoenix Suppressor should never be mounted over the knurled thread protector. GSL Technology, Inc. can provide a smooth thread protector that is properly sized to use on the Phoenix Suppressor. Failure to switch over to the properly sized, smooth thread protector can result in damage to the suppressor. GSL Technology, Inc. can also provide a threaded rear mount by request. This would thread directly onto the factory threaded Heckler and Koch threaded barrel. Call the factory to discuss your needs. Some companies build copies of the MP5 sub-machine guns. Copies are not always built to factory specifications. We cannot guarantee proper alignment on guns not manufactured by Heckler and Koch.

WARNING

Before installation of the Phoenix Suppressor, always remove the magazine from the firearm, open the action and visually examine the weapon to be certain the chamber is empty and the weapon is unloaded. **Failure to do so can result in serious injury.**

GSL Technology, Inc. Tri-Lock Mounting Instructions

1. Make certain the weapon is unloaded, the magazine is removed, the safety is on and the bolt is locked in the open position.
2. Align the 3 grooves in the Phoenix Suppressor rear mount with the 3 lugs on the Heckler and Koch barrel.
3. Pull the Phoenix Suppressor rearward against the spring tension in the mount until the unit can be rotated counter clockwise while holding the weapon.
4. Rotate the Phoenix Suppressor 60 degrees until it stops. Then release the pressure on the suppressor.
5. Rock the suppressor to make sure the lugs have engaged the pockets in the mount.
6. To remove the suppressor, follow these directions in reverse.

Mounting the Optional Thread on Rear Mount

1. Make sure the weapon is unloaded, the magazine is removed, the safety is on and the bolt is in the locked position.
2. Being careful not to cross thread the unit, screw the suppressor onto the factory threaded barrel, making sure that it is aligned with the threads.
3. Tighten the suppressor by hand, making sure it is snugly fit
4. Thread on suppressors can loosen up, so it is the operator's responsibility to frequently check to make sure the suppressor is still locked tightly to the barrel. **Warning!** The suppressor can be HOT and can cause severe burns.

Construction of the Phoenix Suppressor

The Phoenix Suppressor, like its predecessor, is a co-axial design. It has a central core along with the outer core as an expansion chamber. Unlike its predecessor, the Phoenix Suppressor has a series of machined and jetted M-Baffles, which are more efficient than the stamped baffles and spacers that were used in the past models. The baffles are keyed with notches and tangs to maintain the proper alignment of the jetting, giving the suppressor optimum performance.

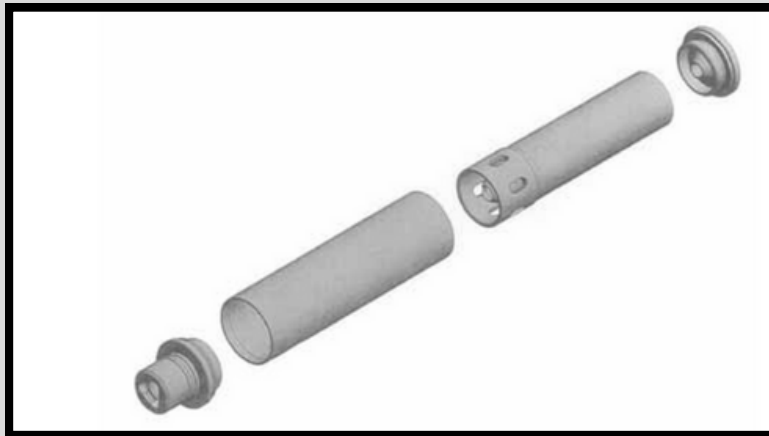
Cleaning the Phoenix Suppressor

Total cleaning of the Phoenix Suppressor is not necessary. GSL Technology has data showing that a suppressor built in this configuration can achieve 100,000 to 200,000 rounds shot through it before it degrades to the point it needs to replace the baffles. We have found that partial disassembly of the unit and cleaning of the expansion chamber, after firing 1,200 to 2,000 rounds through the unit, is sufficient.

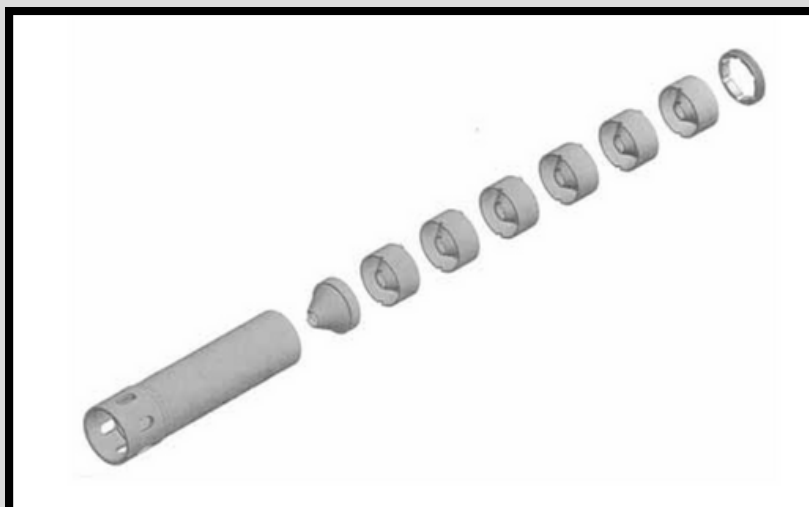
Should you choose to clean your Phoenix Suppressor, keep in mind the components are manufactured of aircraft grade aluminum. You should never use solvents that contain ammonia, including Hoppe's, Sweets and GI bore cleaner. Water based solvents can also damage the aluminum components.

Field Stripping

Unscrew the front cap that is threaded into the central core. This also holds the outer tube in place which is sandwiched between the front cap and the rear mount. The rear mount has an O-Ring in the groove that provides a gas seal. Once the front cap is removed, the outer tube can be slipped off. Unscrew the inner core assembly from the rear mount. There is no need to disassemble the central core any further. However, if you wish, you may unscrew the retainer and remove the M-Baffles.



When replacing the M-Baffles into the central core, align the jets to all be lined up in arrow and keyed with the notches and tangs keyed together. The last baffle has no tangs because it seats up against the retainer. To assemble, follow these directions in reverse.

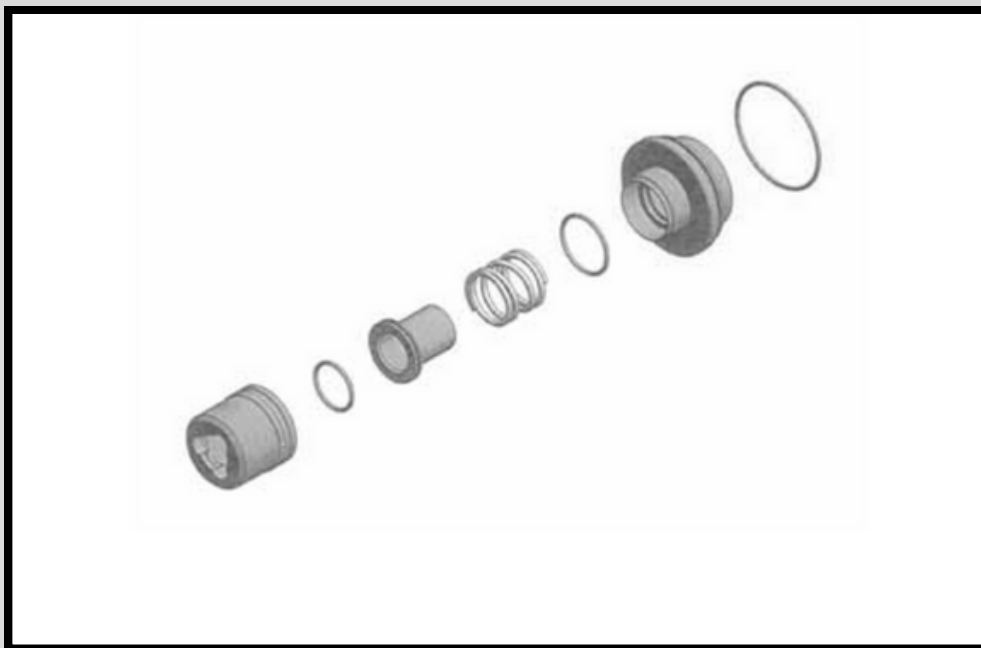


Maintenance of the Tri-Lock Mount

1. The Tri-Lock mount consists of 4 main components: Body, Piston, Spring and Rear Coupling Body. There are also 2 O-Rings to seal the mount.
2. Unscrew the rear coupling body. This will expose the piston and spring. Clean these components and repack with grease. We recommend "Super Lube" which is a multi-purpose grease with Syncon. This can be purchased at any automotive supply or trailer supply store. If this is not available, any other grease would be adequate to use.
3. Inspect the O-Rings for signs of excessive wear or damage. Should they need to be replaced, use the following sizes:

Body O-Ring: 13/16" x 11/16" x 1/16" Viton

Piston O-Ring: 15/16" x 13/16" x 1/16" Viton



Warranty Information

Unconditional Lifetime Warranty. If for any reason you have an issue with a GSL Technology product, we will repair or replace it free of charge. Warranty does not apply if product is altered in any way.

Damaged Suppressor: This or any suppressor may not properly operate and create significant risk of injury or death if damaged or obstructed. Any and all such damage should be reported to an Armor familiar with this suppressor and the weapon system or it should be returned with the RA to GSL Technology, Inc. For more information, contact GSL Technology, Inc. at: warranty@gsltechnology.com.

Manufacturer's Disclaimer

GSL Technology, Inc. manufactures all suppressors the highest quality and technical standards in the industry. However, improper usage by any end-user by this product may result in serious injury to the user or third parties. Therefore, it is the user's responsibility to understand this product and the weapon system used therewith. If you do not understand the instructions in this manual, please contact GSL Technology for further clarification at <http://www.gsltechnology.com>. GSL Technology, Inc. shall have no liability for incidental or consequential damages and under no circumstances be liable for personal injury, death, property damage, environmental damage or economic losses of any type caused by the misuse of this product or negligence on the part of the user. To the extent allowed by law, all liability from act or omission from improper usage of this suppressor is disclaimed. The warranty and disclaimer in this manual for the suppressor is subject to all laws which may limit these terms. To the extent allowed by law, the purchase of this product places an affirmative duty on any distributor, retailer or user to transmit this manual with the suppressor.

For the latest, most complete version of this manual, please visit <http://www.gsltechnology.com>.



**QUESTIONS?
CONTACT US.**

Jackson, Michigan
517-780-9090

**GSL Technology, Inc.
Suppressors are proudly
made in the United
States of America.**

