



FLEA SUPPRESSOR

Owner's Manual

REVISED OCTOBER 2023

Address
5800 Enterprise Dr.
Jackson, MI 49201
PHONE
517-780-9090



TABLE OF CONTENTS

Introduction.....	3
Specifications.....	4
Unboxing.....	5
Mounting Flea Suppressor.....	6-7
Removing the Suppressor from the Firearm.....	8
Disassembly of the Flea Suppressor	9
Cleaning the Suppressor.....	9-10
Accessories for the Flea.....	10
Assembly of the Flea Suppressor.....	11
Warranty Information.....	12
Manufacturer’s Disclaimer.....	12
Suppressor Records.....	13
Warnings.....	14

Thank You for Purchasing the GSL Flea Suppressor!

Thank you for your purchase of a GSL Technology suppressor. We take pride in our engineering driven products that are now, and will always be, designed and manufactured entirely in the United States.

With 9 patents to his credit, and over 35 years of suppressor design and manufacturing experience, our owner and founder Greg Latka has been one of the driving forces in the suppressor industry.

We are confident that you have in your hands, one of the best firearm suppressors available today. Marketing hype is one thing, but performance is entirely different. Our suppressors will quietly perform with the enduring reliability that you can count on for years to come.

GSL Technology is an engineering, performance driven company. We are one of the very few ISO 9000 certified companies in the industry. That means that our company holds itself to a higher level of accountable quality that remains constant over time.

We strive to design and manufacture the best suppressors available on the market within their service criteria.

If you are new to suppressors, you are in for a treat. If you're an old pro, we hope that you will enjoy the fruits of our labor and spread the word!



Flea Specifications

- Caliber: .17HMR, .17Mach 2, .22 Short, .22 Long, .22 Long Rifle, .22 Magnum
- Sound Reduction: 29 dB (.22LR)
- Length: 3.625" (includes mount)
- Diameter: 1.00"
- Weight (with mount): 2.3 oz
- Materials: Aluminum
- Finish: Hard Coat Anodize
- Mount: 1/2x28 direct thread

Notes

The Flea Suppressor is optimized for use with .22 caliber semi-automatic handguns.

The GSL Flea Suppressor is NOT rated for fully automatic firing.

The GSL Flea Suppressor is a user serviceable suppressor and comes with an assembly/disassembly tool.

Flea Box Contents

Be sure to let us know if anything is either missing or damaged within this box and we will gladly get you whatever might need to be replaced. Please read this owner's manual all the way through prior to shooting as it contains important safety and operating information. Your GSL Flea Suppressor is a high-performance tool designed to give you many years of reliable service.



1. GSL Technology Flea Suppressor
2. Blue GSL assembly/disassembly tool
3. Flea Suppressor Owner's Manual

Flea Suppressor Mounts

The GSL Flea Suppressor is available only with the 1/2 x 28 thread direct mount. Do not use any shims or washers in combination with the firearm and the suppressor. The Flea is designed specifically to be used on the .22 caliber semi-automatic handguns and being a blow back operated, fixed barrel, non-tilting (when firing) design, does not require a "booster" for most .22 semi-auto handguns to function reliably with this suppressor. When mounting a Flea on .17HMR or .22 cal rifles, the suppressor also works reliably and efficiently suppresses the report of the firearm.

Commercial loadings vary for .22 rimfire cartridges, from subsonic to up to 1300fps so the sound signatures will vary greatly based on the ammunition selected. Note that short barrels (4" or less) will often not allow .22LR standard loads to reach supersonic speeds and will often sound like commercially available subsonic rounds when fired through a suppressor.



Mounting the Flea Suppressor Firearm

- 1) Examine the threads of both the barrel of the firearm and suppressor for any damage, carbon buildup or debris. Repair, clean and/or remove anything on the threads and insure that they are clean.
- 2) Carefully align the suppressor to the barrel, and lightly press the suppressor onto the barrel so that you can feel the threads.
- 3) Rotate the suppressor counter clockwise while putting a VERY slight amount of pressure inward in order to insure that the starter threads are aligned.
- 5) Now gently rotate the mount clockwise, feeling for any resistance that may indicate the start of cross threading. If no resistance to rotation is noted, continue until the suppressor is firmly in place and fully seated against the shoulder of the barrel threads. **BE CAREFUL NOT TO CROSS THREAD.**
- 6) Fully screw the suppressor in until it is snug.

Note: Mounting to a rifle barrel is identical to mounting on a handgun.

Best performance will be achieved when used with subsonic ammunition or bullets traveling at speeds of 1050fps or slower (under standard environmental conditions).



Removing the Flea Suppressor from the Firearm

To remove, reverse the steps outlined on page 7.

CAUTION: Suppressors can gain 7-10° F (or more) per round fired and therefore can be **EXTREMELY HOT** to the touch depending upon how many rounds were fired and over what time frame they were fired. Understand that attempting to remove a hot suppressor without protection (like welder's gloves) can cause severe injury. Also, do **NOT** put your firearm with the suppressor mounted or the suppressor alone when it is hot, into anything that can be melted or otherwise damaged by heat of up to 700° F or more. Your suppressor will cool according to ambient temperature and the initial peak temperature that your suppressor reached, so plan accordingly.

On occasion you may experience difficulty in removing the suppressor from the threads of a barrel due to carbon build up (often referred to as carbon lock). Be sure that the suppressor is not hot, and firmly tap the suppressor squarely on the muzzle end onto a carpeted surface or otherwise hard surface that has a cushioned top covering. Doing so will break the carbon that is locking the threads and allow you to removed the suppressor. You may also use a 2x4 or similar piece of soft wood, or a soft rubber mallet, and tap on the muzzle end squarely. You will not have to, nor want to hit the muzzle with a lot of force to accomplish this.



Disassembly of the Flea Suppressor

The Flea comes with a blue disassembly tool that will open it from the muzzle end. Wear gloves and disassemble in an area that will not be harmed by lead particulate.

- 1) Insert the tool into the end cap
- 2) Rotate it counter clockwise
- 3) Remove the baffles by turning the suppressor so that the threaded end is up, the baffles should fall free. If they don't, a wooden dowel or pencil can be inserted into the threaded end to push the baffles free. Do NOT use a metal rod to push as this can damage the baffles.

Cleaning the Flea Suppressor

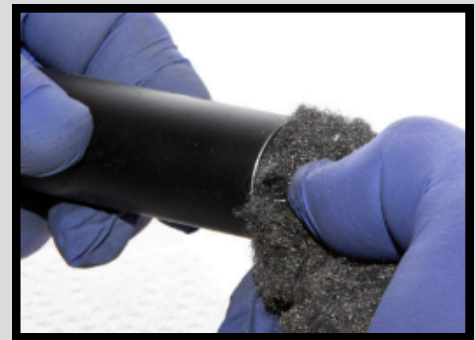
Cleaning the Flea suppressor is something that we don't recommend, it is designed to shoot thousands of rounds through it without the need for cleaning. Shooting corrosive primed ammunition can cause damage to any metal surfaces including your barrel and suppressor, so using such ammunition is never recommended. If you choose to clean the baffles and tube, do not use any products with ammonia in them or water, as these are items that can cause corrosion. The use of 0000 Steel wool or green ScotchBrite to remove any buildup is all that you need. Do not use a steel or metal bristled brush.

There is no need to ever clean.



Cleaning the Flea Suppressor Continued...

If you choose to clean, remember, you don't have to clean back to bare metal on every surface, and in fact, you should not. Suppressors actually work a little better when they are a bit dirty surprisingly enough. Use the Scotchbrite or the 0000 steel wool to clean off enough of the lead/carbon deposits, so that the pieces can easily be reassembled and that is all you should do. The rims of the baffles, the threads of the end cap (both outside threads of the end cap and inner threads of the suppressor body) and the inside surface of the suppressor body are really, the only areas that you would normally even bother with IF YOU DESIRE TO CLEAN AT ALL. If the center holes/jets of the baffles have lead debris, you can remove this however, be careful not to damage these critical areas. After cleaning, blow all dust and debris off prior to reassembly. Remember, you don't clean your automobile's muffler, so don't worry about cleaning your suppressor, both were designed to function with the byproducts of combustion inside them...

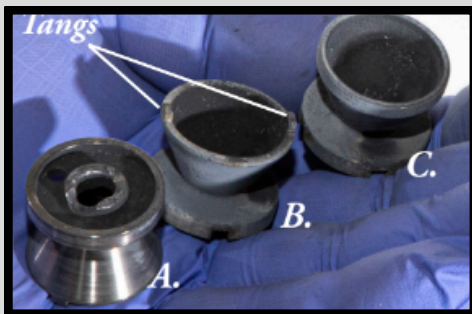


GSL Flea Suppressor Accessories

The GSL Technology Flea suppressor is designed for a lifetime of shooting. Some accessories for this suppressor may be found to make it more useful for your specific needs. The most up to date list will always be found at gsstechnology.com.

Assembly of the Flea Suppressor

Assembly of the Flea suppressor is straightforward with the following caveat. There are 3 different type of baffles, as shown in the picture. The blast baffle (A) is the baffle closest to the suppressor mount, and in the case of the GSL Flea Suppressor, it can be identified easily by 1) it is made from titanium and 2) it has a hole (as illustrated) in it's base. The center baffles (B) have two tangs from the base of the cone that will align with holes in the next baffles in the stack. Finally, the last baffle in the stack (C) (closest to the exit/end cap) is smooth at the rim, without the tangs. It is critical to stack in the following order, last baffle with no tangs on the table, followed by 2 of the center baffles with the tangs, and topped by the blast chamber baffle made of titanium and which has a hole in the base. The next thing to know is that the baffle must be "clocked" so that the exit jets are rotated relative to each other in a specific pattern in order to maximize their sound suppression. Looking down from above, the front baffle should have the hole on the side of the cone, oriented at the 3 o'clock position. The next baffle at the 12 o'clock position, the next at the 6 o'clock and the blast baffle at the 12 o'clock position. You can find a diagram on the back cover of this manual. Re-assemble by carefully inserting the tube onto the properly clocked stack, and preventing the stack from becoming dislodged as you bring it into position to screw on the end cap. When properly seated, the end cap will be flush with the body.



Warranty Information

GSL Technology, Inc. has an unconditional, no BS lifetime warranty. If for any reason you have an issue with a GSL Technology product, product, we will repair it free of charge. We cannot warranty any product that has been altered in any way.

Damaged Suppressor

If your suppressor is damaged or obstructed it may not properly operate and create significant risk of injury or death. Any and all such damage should be reported to an armorer familiar with this suppressor and the weapon system, or it should be returned with a copy of your form 4 or for dealers/SOTs form 3's and a letter stating that it is coming back for repair and what needs to be done to GSL Technology, Inc. There is no need to go through a Class 3 FFL/SOT as you are sending it directly back to the manufacturer for repairs. For more information, contact GSL Technology, Inc at:
warranty@gsltechnology.com.

Manufacturer's Disclaimer

GSL Technology, Inc. manufactures all suppressors with the highest quality and technical standards in the industry. Improper usage of this product by any user, may result in serious injury or death to the user or third parties. Therefore, it is the user's responsibility to understand this product and the weapon system used in conjunction with it. If you do not understand the instructions in this manual, please contact GSL Technology for further clarification or go to www.gsltechnology.com. GSL Technology, Inc. shall have no liability for incidental or consequential damages and under no circumstances be liable for personal injury, death, property damage, environmental damage, damage to the weapon or economic losses of any type caused by the misuse of this product or negligence on the part of the user. To the extent allowed by law all liability from act or omission from improper usage of this suppressor is disclaimed. The warranty and disclaimer in this manual for the suppressor is subject to all laws which may limit these terms. To the extent allowed by law, the purchase of this product places an affirmative duty on any distributor, retailer, or user to transmit this manual with the suppressor.

For the latest, most complete version of this manual, please visit: www.gsltechnology.com

Flea Suppressor Records

Please register your suppressor with GSL Technology, Inc. so that we may notify you of any updates or new product information.

Your suppressor has a lifetime warranty. Fill out the following personal suppressor record for future reference:

Owner Name

Suppressor Model:

Serial Number:

(Located on the body of the suppressor)

Retailer Purchased at:

Purchase Date: _____

Warnings

Read the Owner/Operator manual in its entirety before using the suppressor. Failure to follow installation and maintenance instructions detailed in this manual can result in potential for serious injury to the user and damage to the weapon.

Verify Firearm is Unloaded

Visually and physically confirm your firearm is unloaded before attempting or performing any of the procedures in this manual. Failure to ensure the firearm is unloaded could result in an unintentional discharge, causing injury or death.

Bullet Diameter Warning

GSL Flea Suppressors are for .222" diameter projectiles which correspond to the .22 family of rimfire cartridges. Smaller diameter bullets in pistol calibers such as .17' rimfires may be used, but will not be optimized for the larger diameter of the Flea. The best performance will be with .22LR subsonic ammunition. **DOUBLE CHECK YOUR CHAMBERING** prior to attaching the GSL Flea Suppressor to your firearm.

Burn Warning

Allow the suppressor to cool to ambient temperature before removal, service and/or storage. The outside surface temperature of this suppressor may greatly exceed 104° F, therefore protective gloves should be worn at all times in attaching or detaching the suppressor. Failure to do so may result in severe burns to hands and any other unprotected skin surface.

Pinch Warning

The point of attachment and detachment is a pinch point and caution should be taken, including wearing protective gloves, to avoid severe injury at this pinch point.

Muzzle Warning

The muzzle of the firearm is different when a suppressor is attached. However, this is still the point where the projectile exits the weapon system, and the muzzle should not cover or sweep any area that the user would not want to destroy or kill.

Sonic Crack Warning

This suppressor will NOT protect the shooter or those in close proximity to the firearm, from hearing damage when, and if, the projectile exceeds the speed of sound (in dry air at 68 F (20 C), the speed of sound is about 1,125 ft/sec (343 meters/sec). Therefore, proper hearing (and eye) protection should be worn at all times when using firearms.

Suppressed firing can appear that the bullet has reduced power. THIS IS NOT CORRECT. Treat the firearm as you should normally be treating a weapon that is unsuppressed. All firearms safety rules still apply to suppressed weapons.



**QUESTIONS?
CONTACT US.**

Jackson, Michigan
517-780-9090

**GSL Technology, Inc.
Suppressors are proudly
made in the United
States of America.**

